

Board of Trustees & Health Care Program Board

NE Region Trustee & Chair
Paul Schmidt, Councilmember, Cheney

AWC Board Trustee & Vice Chair
Josh Penner, Mayor, Orting

SE Region Trustee
Francis Benjamin, Mayor, Pullman

NW Region Trustee
Julie Struck, Mayor, South Bend

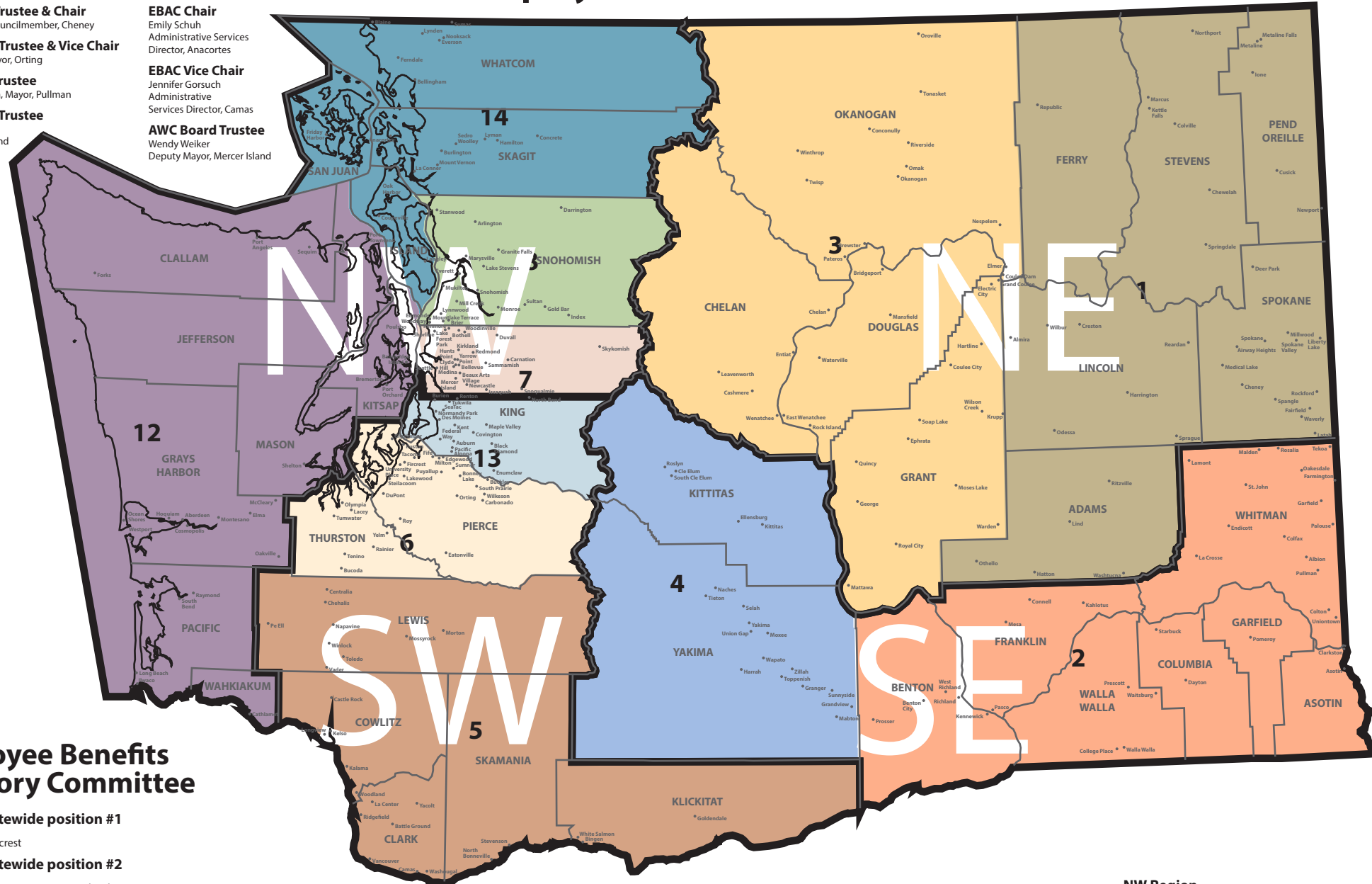
SW Region Trustee
Jennifer Jensen, Councilmember, Ruston

EBAC Chair
Emily Schuh
Administrative Services Director, Anacortes

EBAC Vice Chair
Jennifer Gorsuch
Administrative Services Director, Camas

AWC Board Trustee
Wendy Weiker
Deputy Mayor, Mercer Island

ASSOCIATION OF WASHINGTON CITIES Employee Benefit Trust



Employee Benefits Advisory Committee

At-large statewide position #1
Dawn Masko
City Manager, Fircrest

At-large statewide position #2
Debbie Lund
Human Resources Director, Port Orchard

At-large Eastern position #3
Abby Gribi
Town Administrator, Newport

At-large Western position #4
Karen Bennett
Human Resources Director, Yelm

At-large noncity entity position #5
Greg Griffin
Administrative Services Manager, Spokane Regional Transportation Council

NE Region

1 District 1
Holly Pannell
City Clerk/Human Resources Manager, Colville

3 District 3
Katlen Henke
HR Generalist, Wenatchee

SE Region

2 District 2
Deb Peschel
Human Resources Manager, Pullman

4 District 4
Heidi Riojas
City Clerk, Toppenish

SW Region

5 District 5 & Vice Chair
Jennifer Gorsuch
Administrative Services Director, Camas

6 District 6
Kelsey Geddes
Community Engagement Manager, Fife

13 District 13
Adrienne Johnson-Newton
Human Resources Director, Des Moines

NW Region

7 District 7
Mathew Pruitt
Human Resource Director, Bothell

8 District 8
Julie Good
Senior Human Resources Specialist, Lake Stevens

12 District 12
Dani Smith
Human Resources Director, Aberdeen

14 District 14 & Chair
Emily Schuh
Administrative Services Director, Anacortes

Updated May 2024